



NF565/16 (CE)

16 GA. FINISH NAILER



OPERATING AND MAINTENANCE MANUAL



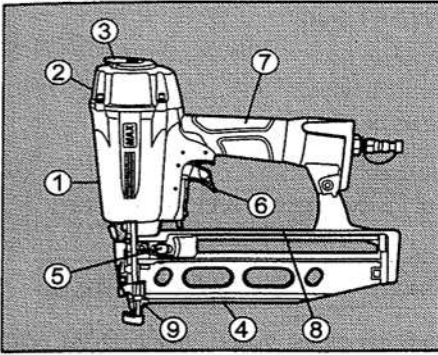
WARNING

BEFORE USING THIS TOOL, STUDY THIS MANUAL TO ENSURE SAFETY WARNING AND INSTRUCTIONS.
KEEP THESE INSTRUCTIONS WITH THE TOOL FOR FUTURE REFERENCE.

JULY 2012

SPECIFICATIONS AND TECHNICAL DATA

1. NAME OF PARTS



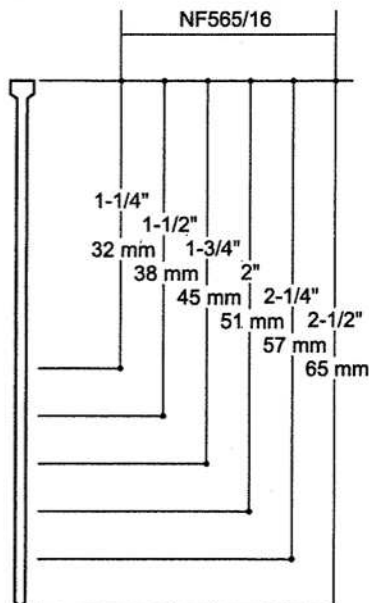
- ① Frame
- ② Cylinder Cap
- ③ Exhaust Port
- ④ Magazine
- ⑤ Pusher Lock Button
- ⑥ Trigger
- ⑦ Grip
- ⑧ Warning Label
- ⑨ Outlet

2. TOOL SPECIFICATIONS

PRODUCT NO.	NF565/16
HEIGHT	284 mm (11-3/16")
WIDTH	95 mm (3-3/4")
LENGTH	297 mm (11-11/16")
WEIGHT	1.5 kg (3.4 lbs)
RECOMMENDED OPERATING PRESSURE	5 to 7 bar (70 to 100 p.s.i.)
LOADING CAPACITY	110 Nails
AIR CONSUMPTION	1.3 l at 7 bar (0.045 ft ³ at 100 p.s.i.) operating pressure

* The machine has been compactly designed in order to improve operating weight balance.

3. BRAD NAIL SPECIFICATIONS



Wire gauge: 16
<1.4 mm>

TOOL AIR FITTINGS:

This tool uses a 1/4" N.P.T. male plug. The inside diameter should be 7mm (.28") or larger. The fitting must be capable of discharging tool air pressure when disconnected from the air supply.

RECOMMENDED OPERATING PRESSURE:

5 to 7 bar (70 to 100 p.s.i.). Select the operating air pressure within this range for best fastener performance.

DO NOT EXCEED 8.3 bar (120 p.s.i.).

4. TECHNICAL DATA

① NOISE

A-weighted single-event sound power level
NF565/16----- LWA, 92.3 dB
A-weighted single-event emission sound pressure level at work station

NF565/16----- LpA, 84.2 dB

These values are determined and documented in accordance to EN12549 : 1999.



② VIBRATION

Vibration characteristic value

= 3.5 m/s²

These values are determined and documented in accordance with ISO 8662-11.

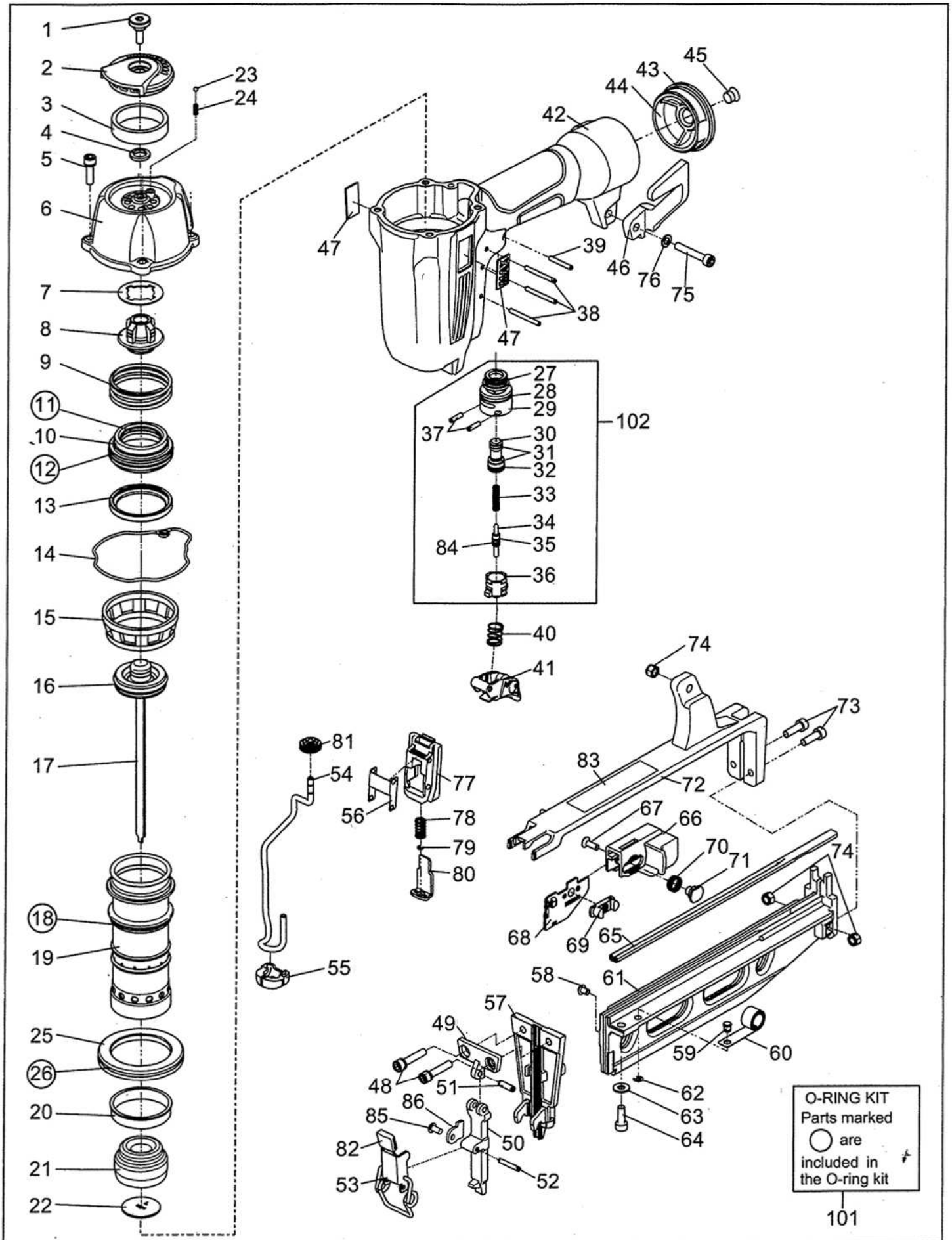
This value is a tool-related characteristic value and does not represent the influence to the hand-arm-system when using the tool. An influence to the hand-arm-system when using the tool will, for example, depend on the gripping force, the contact pressure force, the working direction, the adjustment of mains supply, the workpiece, the workpiece support.

5. APPLICATIONS

- * Door and window casings
- * Plywood, decorative boards, and other interior finish works
- * Panel assembly and moldings
- * Sub flooring
- * Furniture assembly including drawer assembly, case back nailing, blind pinning, and other finishing works
- * Cabinet assembly

NF565/16(CE)

**EXPLODED
VIEW AND SPARE
PARTS LIST**



NF565/16

ITEM NO.	PART NO.	MATERIAL	ENGLISH
1	TA19716	Steel	EXHAUST SCREW
2	TA19718	Nylon	EXHAUST COVER
3	TA19719	Polyester textile fiber	EXHAUST FILTER
4	TA19717	Rubber	EXHAUST SPACER
5	TA19016	Steel	HEX. SOC. HD. CAP SCREW ASSY
6	TA19476	Aluminum	CYLINDER CAP
7	TA19477	Steel	PISTON STOP WASHER
8	TA19478	Polyurethan	PISTON STOP
9	TA19479	Steel	COMPRESSION SPRING 9479
10	TA19480	Polyacetal	HEAD VALVE PISTON
11	TA19481	Rubber	O-RING 9481
12	TA19482	Rubber	O-RING 9482
13	TA19483	Polyurethan	CYLINDER SEAL
14	TA19484	Rubber	CYLINDER CAP SEAL
15	TA19802	Nylon	CYLINDER WASHER
16	HH11155	Rubber	O-RING 1AP32
17	TA70407	Aluminum+Steel	MAIN PISTON UNIT
18	TA19487	Rubber	O-RING 9487
19	TA19488	Aluminum	CYLINDER
20	TA19489	Rubber	CHECK VALVE
21	TA19529	Rubber	BUMPER
22	TA19490	Steel	NOZZLE
23	TA19795	Steel	STEEL BALL
24	TA19794	Steel	COMPRESSION SPRING 9794
25	TA19491	Aluminum	CYLINDER RING
26	TA19492	Rubber	O-RING 9492
27	TA19738	Rubber	O-RING 9738
28	TA19739	Rubber	O-RING 9739
29	TA19740	Polyacetal	TRIGGER VALVE HOUSING
30	TA19741	Brass	PILOT VALVE
31	TA19742	Rubber	O-RING 9742
32	TA19743	Rubber	O-RING 9743
33	TA19744	Steel	COMPRESSION SPRING 9744
34	TA19745	Steel	TRIGGER VALVE STEM
35	TA19159	Rubber	O-RING
36	TA19746	Polyacetal	TRIGGER VALVE CAP
37	TA19747	Steel	SPRING PIN 9747
38	TA19749	Steel	SPRING PIN 9749
39	TA19748	Steel	SPRING PIN 9748
40	TA19750	Steel	COMPRESSION SPRING 9750
41	TA19751	Nylon+Rubber	TRIGGER UNIT
42	TA70403	Magnesium+Rubber	FRAME UNIT
43	TA19495	Rubber	O-RING 9495
44	TA19496	Aluminum	END CAP
45	TA18933	Polyethylene	DUST COVER
46	TA19497	Nylon	HOOK
47	TA18930	ABS	NAME PLATE
48	TA19498	Steel	HEX. SOC. HD. CAP SCREW ASSY
49	TA19499	Steel	DRIVER GUIDE B
50	TA19500	Steel	DRIVER GUIDE A
51	TA19501	Steel	SPIRAL PIN 9501
52	TA19502	Steel	SPIRAL PIN 9502
53	TA19503	Steel	FRONT LATCH UNIT
54	TA19504	Steel	CONTACT ARM B
55	TA19505	Polyurethan	CONTACT TOP
56	TA19506	Steel	ARM GUIDE A
57	TA19507	Steel	NOSE
58	TA19508	Steel	HEX. SOC. BUTTON HD. SCREW
59	TA19509	Steel	STEP PIN 9509
60	TA19510	Steel	SPIRAL SPRING

ITEM NO.	PART NO.	MATERIAL	ENGLISH
61	TA19511	Nylon	MAGAZINE A
62	TA19341	Steel	E-RING
63	TA19512	Steel	WASHER
64	TA19779	Steel	HEX. SOC. HD. CAP SCREW
65	TA19513	Steel	NAIL COVER
66	TA19514	Nylon	PUSHER HOLDER
67	TA19515	Steel	FLAT HD. SCREW
68	TA19516	Steel	PUSHER
69	TA19517	Nylon	PUSHER LOCK A
70	TA19518	Steel	COMPRESSION SPRING 9518
71	TA19519	Nylon	PUSHER LOCK B
72	TA81294	Nylon	MAGAZINE ASSY
73	TA19521	Steel	HEX. SOC. HD. CAP SCREW
74	TA19777	Steel	NUT
75	TA19522	Steel	HEX. SOC. HD. CAP SCREW
76	TA19760	Steel	WASHER
77	TA19523	Nylon	ARM GUIDE B
78	TA19199	Steel	SPRING
79	TA19201	Steel	C-RING
80	TA19524	Steel	CONTACT ARM A
81	TA19182	Steel	ADJUST DIAL
82	TA19796	Rubber	LATCH COVER
83	TA19485	Polyethylene terephthalate	NAME LABEL
84	TA19801	Rubber	O-RING 9801
85	TA19534	Steel	HEX. SOC. BUTTON HD. SCREW
86	TA19533	Steel	PLATE
101	TA81293		O-RING KIT
102	TA81290		TRIGGER ASSY